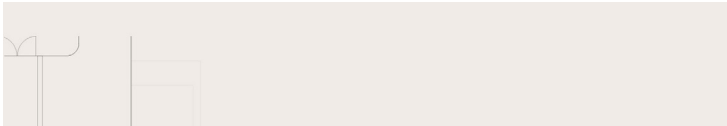
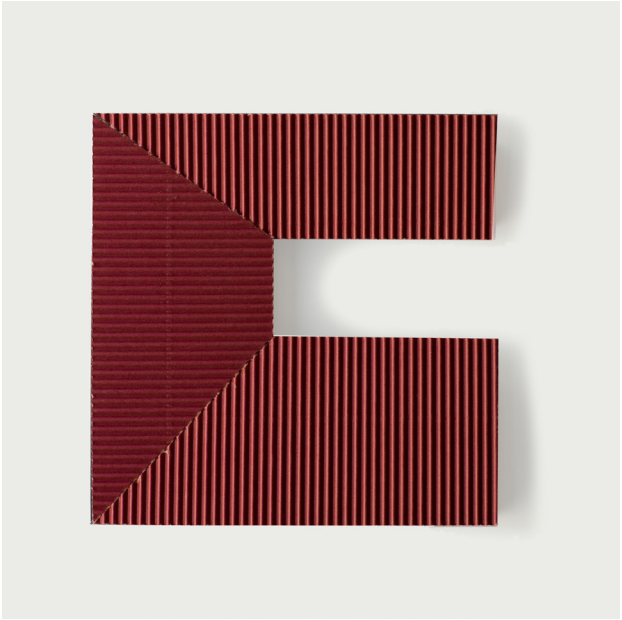
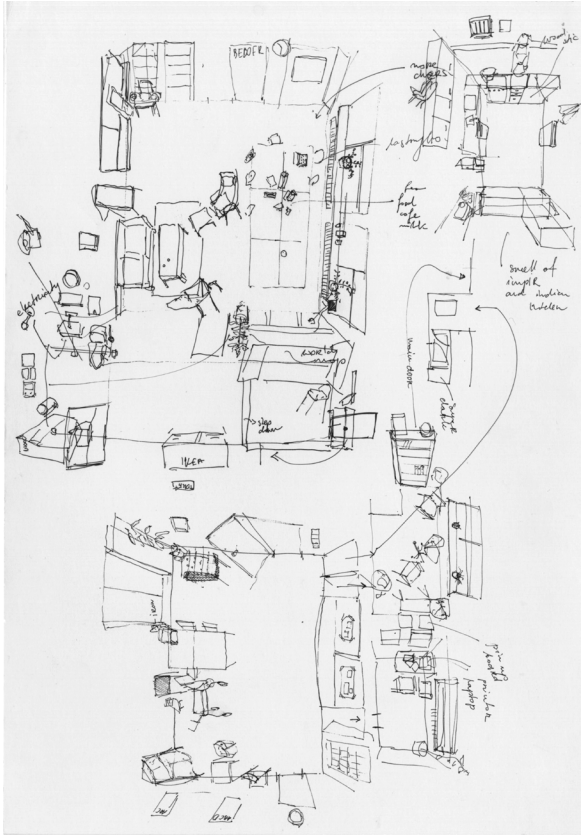
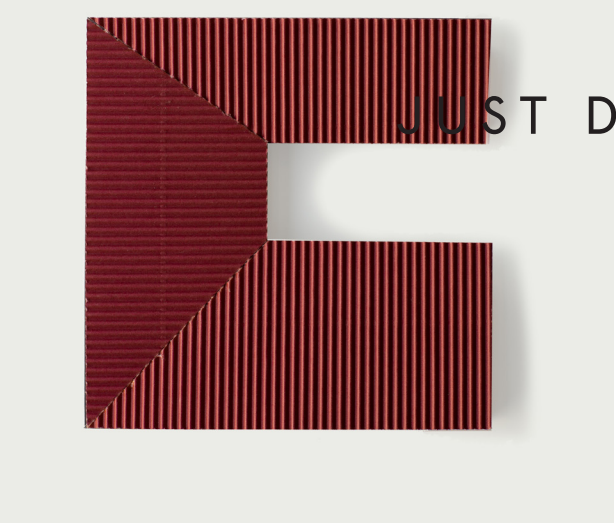
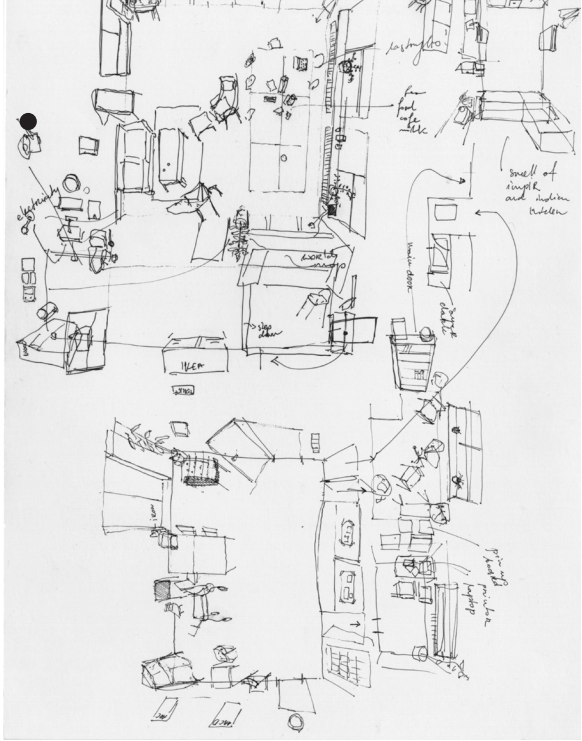


project, about, news

JUST DRAW



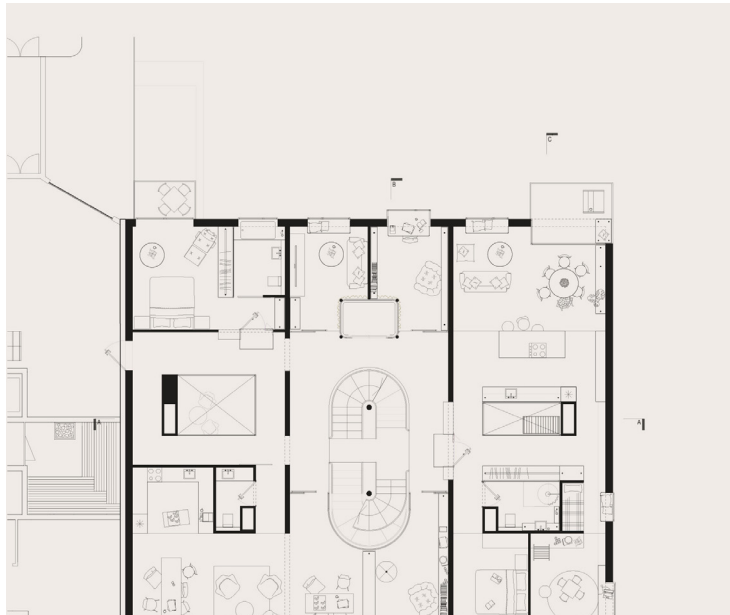
project, about, news

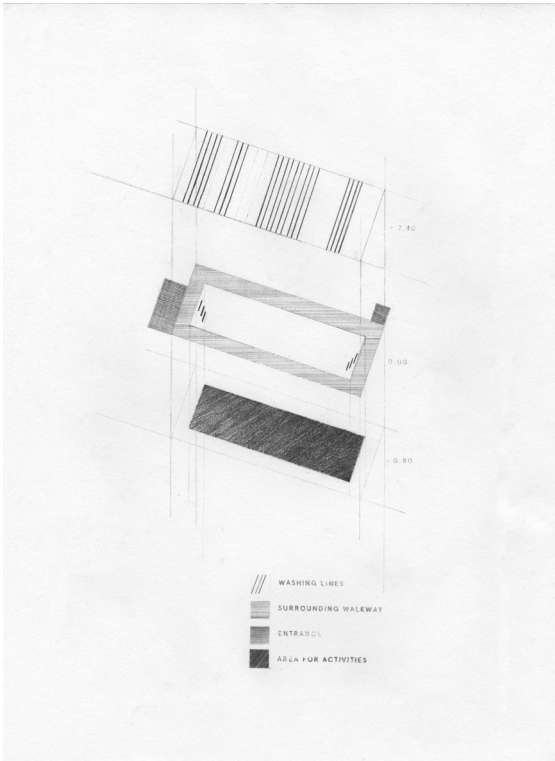


JUST DRAW

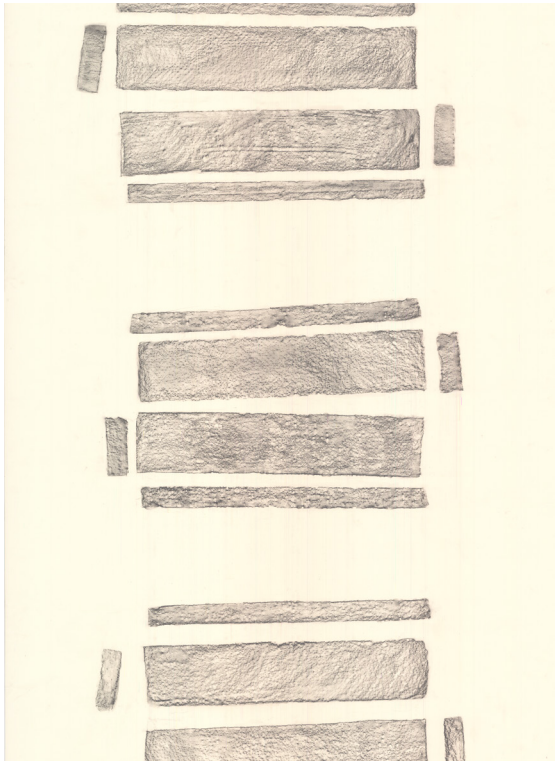
JUST DRAW

THE REALIZATION • fire cooking tools • materials palette





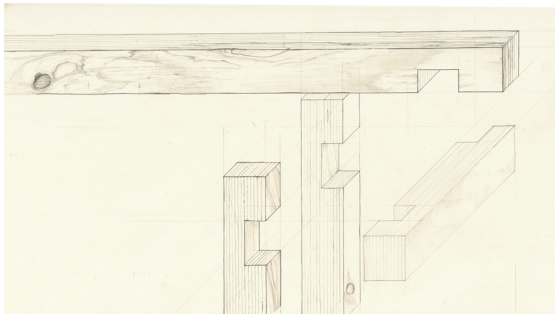
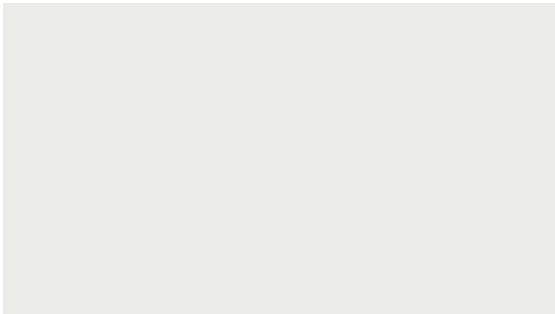
the laundry room



the fireplace



commonplace



project, about, news
the laundry room, the fireplace, commonplace,
sofa, flower shelf, alternative history of the church

JUST DRAW



THE BEST DIPLOMA PROJECT
NOMINATION FOR RIBA PRESIDENT’S SILVER MEDALS

THE UNIT · RESIDENTIAL BUILDING
UNIVERSITY OF LIECHTENSTEIN
NO CONTEXT · COLLECITVE LIVING

The project tackles three challenges in society. The first one is the aging population. The second is the reduction of energy consumption per square meter, while increasing the amount of the square meters per person. Last but not least, the challenge quoted by Zygmunt Bauman “in the end of independence there is emptiness of life. Independence should be replaced with very pleasurable interdependency”.

All of those challenges have inspired solutions. Firstly, the apartments, easily turn into shared nurseries and available by an inclusive stairs, are convenient

project, about, news
 the laundry room, the fireplace, commonplace,
 sofa, flower shelf, alternative history of the church

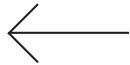


THE BEST DIPLOMA PROJECT
 NOMINATION FOR RIBA PRESIDENT'S SILVER MEDALS

The project tackles three challenges in society. The first one is the aging population. The second is the reduction of energy consumption per square meter, while increasing the amount of the square meters per person. Last but not least, the challenge quoted by Zygmunt Bauman “in the end of independence there is emptiness of life. Independence should be replaced with very pleasurable interdependency”.

All of those challenges have inspired solutions. Firstly, the apartments, easily turn into shared nurseries and available by an inclusive stairs, are convenient for young as well as elderly habitants. Month, years and decades of domestic life have been shown in the drawing “Notion of time”.

The areas are designed to subconsciously encourage a person to engage with the community. The building hosts group of individuals living together, in the precious interdependency of a contemporary community.



possibility to scral
picture with a
mounts